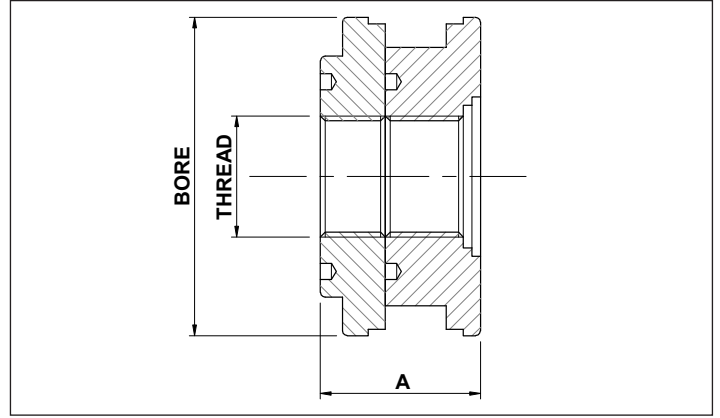


LARGE PISTONS

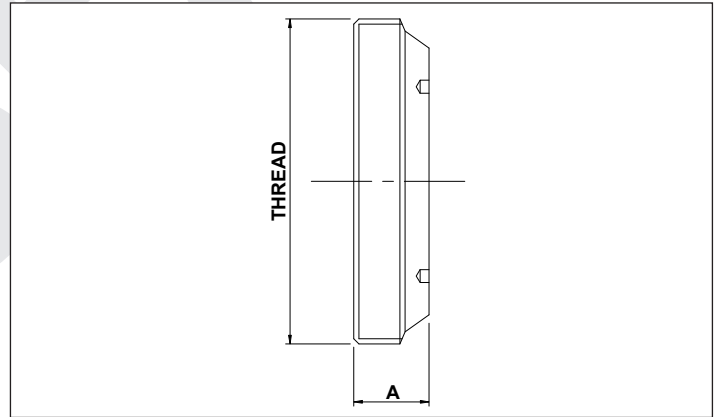


METAL PISTON MP	CYLINDER BORE 180	INTERNAL THREAD 80	TOTAL LENGTH A 82	THREADED TH
--------------------	----------------------	-----------------------	----------------------	----------------

PART NUMBER	CYLINDER BORE	A	THREAD	SEALKIT
MP1808082TH	180	82	80 x 2	PK180
MP2008082TH	200	82	80 x 2	PK200
MP2209082TH	220	82	90 x 2	PK220
MP2509882TH	250	82	98 x 2	PK250

MATERIAL: STEEL 11SMn30- 080M46
 MAXIMUM WORKING PRESSURE 300 BAR

LARGE THREADED END CAPS



END CAP EC	CYLINDER BORE 180	TOTAL LENGTH A 35	THREADED TH
---------------	----------------------	----------------------	----------------

PART NUMBER	CYLINDER BORE	A	THREAD
EC18035TH	180	35	185 x 2.5
EC20048TH	200	48	205 x 2.5
EC22048TH	220	48	225 x 2.5
EC25048TH	250	48	255 x 2.5

MATERIAL: STEEL S355JR - ASTM A105