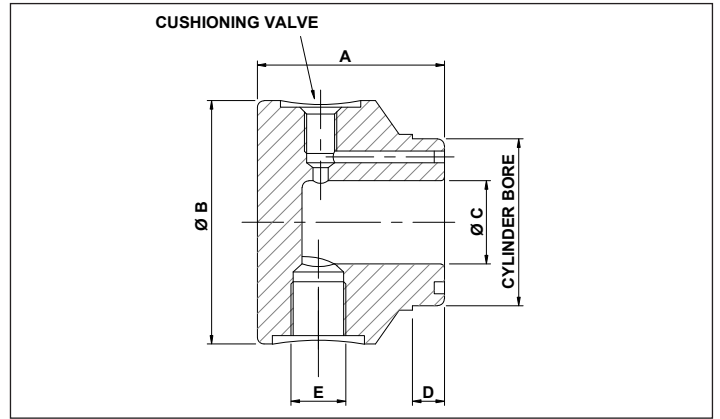


END CAPS FOR ADJUSTABLE CUSHIONING

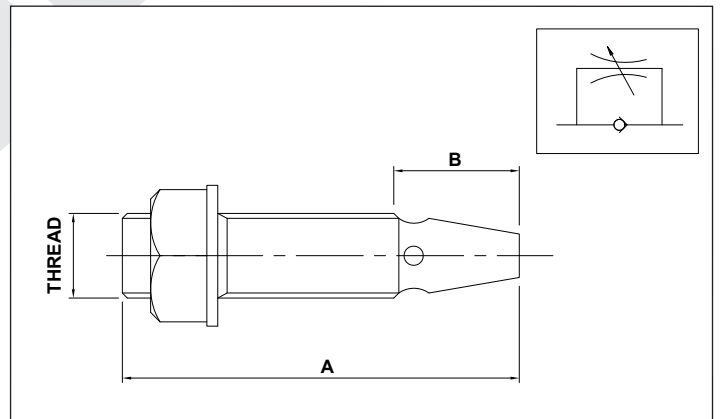


END CAP EC CYLINDER BORE 40 LENGTH A 44 CUSHIONING CUSHION

PART NUMBER	CYLINDER BORE	A	Ø B	Ø C	D	BSP PORT E	CUSHIONING VALVE
EC4044-CUSHION	40	44	58	20	7	1/4"	8 x 1
EC5048-CUSHION	50	48	65	24	8	1/4"	8 x 1
EC6560-CUSHION	65	60	80	30	10	3/8"	10 x 1
EC8068-CUSHION	80	68	95	38	10	1/2"	12 x 1.5
EC10077-CUSHION	100	77	115	48	10	1/2"	12 x 1.5
EC12590-CUSHION	125	90	145	65	10	3/4"	14 x 1.5
EC140100-CUSHION	140	100	160	75	10	3/4"	14 x 1.5
EC160100-CUSHION	160	100	180	80	10	3/4"	14 x 1.5

MATERIAL : STEEL S355JR-ASTM A105

FLOW CONTROL VALVE (CUSHIONING)



FLOW CONTROL VALVE FCV VALVE SIZE QR2 THREAD SIZE M8x1

PART NUMBER	A	B	THREAD
FCV-QR2-M8 x 1	28	8.70	8 x 1
FCV-QR3-M10 x 1	36	11.31	10 x 1
FCV-QR4-M12 x 1.5	40	12.28	12 x 1.5
FCV-QR5-M14 x 1.5	44	15.36	14 x 1.5

MATERIAL : STEEL SURFACE PHOSPHATED HEAT TREATED FOR HARDNESS
 DIN 51524 & 51252
 OPENING PRESSURE 0.5 BAR
 MAXIMUM PRESSURE 300 BAR