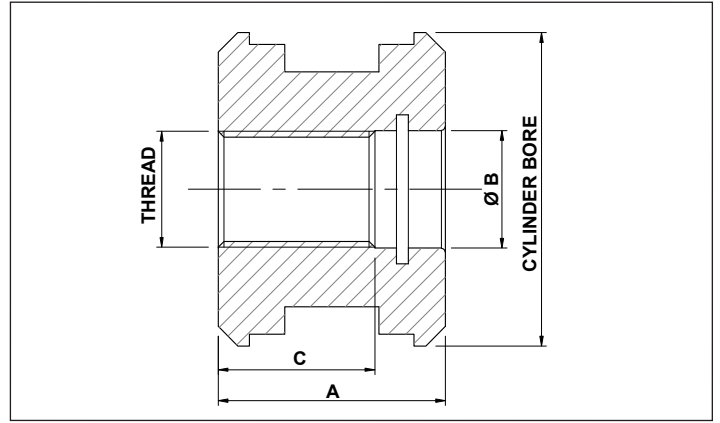


## STANDARD THREADED PISTONS



METAL PISTON MP	CYLINDER BORE 25	INTERNAL THREAD 10	TOTAL LENGTH A 25	THREADED TH	ALUMINUM AL
--------------------	---------------------	-----------------------	----------------------	----------------	----------------

PART NUMBER	CYLINDER BORE	A	Ø B	C	THREAD
MP251025TH-AL*	25	25	11.1	17.5	10 x 1.5
MP301225TH	30	25	13.1	17.5	12 x 1.5
MP321640TH	32	40	17.1	28	16 x 1.5
MP401640TH	40	40	17.1	30	16 x 1.5
MP502040TH	50	40	21.1	28	20 x 1.5
MP552240TH	55	40	21.1	30	22 x 1.5
MP602045TH	60	45	21.1	30	20 x 1.5
MP602445TH	60	45	25.1	30	24 x 2
MP632445TH	63	45	25.1	30	24 x 2
MP652445TH	65	45	25.1	30	24 x 2
MP702445TH	70	45	25.1	30	24 x 2
MP752445TH	75	45	25.1	30	24 x 2
MP802445TH	80	45	25.1	30	24 x 2
MP802745TH	80	45	28.1	30	27 x 2
MP902750TH	90	50	28.1	35	27 x 2
MP903350TH	90	50	35.1	35	33 x 2
MP1003350TH	100	50	35.1	35	33 x 2
MP1004050TH	100	50	42.1	35	40 x 2
MP1103950TH	110	50	42.1	35	39 x 3
MP1204250TH	120	50	45.1	35	42 x 3
MP1254250TH	125	50	45.1	35	42 x 3
MP1304250TH	130	50	45.1	35	42 x 3
MP1404858TH	140	58	51.1	40	48 x 3
MP1504858TH	150	58	51.1	40	48 x 3
MP1605258TH	160	58	54.1	40	52 x 3

**THREADED PISTONS COME COMPLETE WITH SEALS**

**STANDARD THREADED PISTONS ARE DESIGNED TO FIT OUR RANGE OF THREADED RODS**

MATERIAL : STEEL 11SMn30 - 080M46  
 \* MATERIAL : ALUMINIUM UNI 2011-11S  
 MAXIMUM WORKING PRESSURE 250 BAR