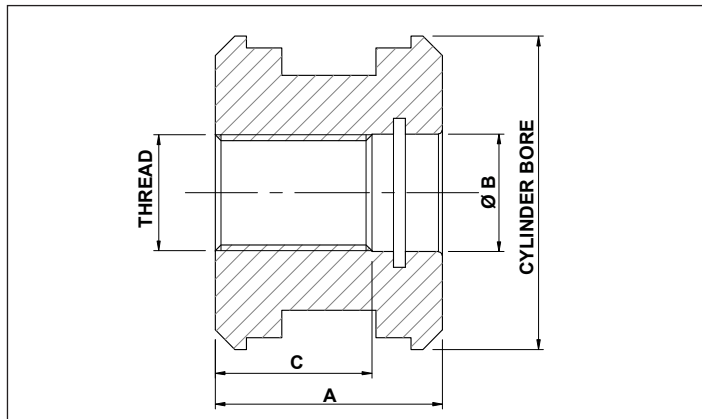


## SHORT THREADED PISTONS



METAL PISTON MP	CYLINDER BORE 25	INTERNAL THREAD 10	TOTAL LENGTH A 25	THREADED TH	ALUMINIUM AL	SHORT PISTON SP
--------------------	---------------------	-----------------------	----------------------	----------------	-----------------	--------------------

PART NUMBER	CYLINDER BORE	A	Ø B	C	THREAD
MP251025TH-AL*	25	25	11.1	17.5	10 x 1.5
MP301225TH	30	25	13.1	17.5	12 x 1.5
MP321233TH-SP	32	33	13.1	25.5	12 x 1.5
MP401427TH-SP	40	27	17.1	19	14 x 1.5
MP401627TH-SP	40	27	17.1	19	16 x 1.5
MP502030TH-SP	50	30	21.1	21	20 x 1.5
MP602035TH-SP	60	35	21.1	24	20 x 1.5
MP602435TH-SP	60	35	25.1	24	24 x 2
MP632435TH-SP	63	35	25.1	24	24 x 2
MP652435TH-SP	65	35	25.1	24	24 x 2
MP702435TH-SP	70	35	25.1	24	24 x 2
MP752435TH-SP	75	35	25.1	24	24 x 2
MP802740TH-SP	80	40	28.1	26	27 x 2
MP903340TH-SP	90	40	35.1	26	33 x 2
MP1003340TH-SP	100	40	35.1	26	33 x 2

THREADED PISTONS COME COMPLETE WITH SEALS

SHORT THREADED PISTONS ARE DESIGNED TO FIT OUR RANGE OF THREADED RODS

MATERIAL : STEEL 11SMn30 - 080M46  
 \* MATERIAL : ALUMINIUM UNI 2011-11S  
 MAXIMUM WORKING PRESSURE 200 BAR