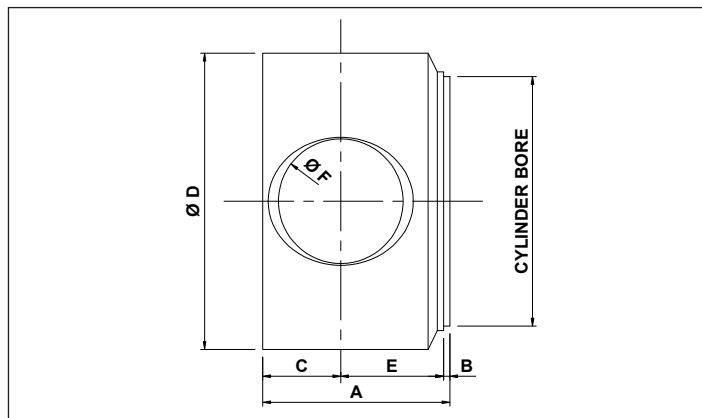


END CAPS BORED



END CAP	CYLINDER BORE	TOTAL LENGTH A	HOLE SIZE	BORED
EC	25	30	12	B

PART NUMBER	CYLINDER BORE	A	B	C	Ø D	E	Ø F
EC2530-12B *	25	30	2	12	35	16	12.1
EC3042-12B	30	42	2	17	40	23	12.1
EC3042-16B	30	42	2	17	40	23	16.2
EC3042-BLA	30	42	2		40		BLANK
EC3240-16B *	32	40	2	17	40	21	16.2
EC3240-BLA	32	40	2		40		BLANK
EC4035-16B	40	35	2	15	50	18	16.2
EC4038-20B	40	38	2	18	50	18	20.25
EC4040-20B	40	40	2	18	50	20	20.5
EC4049-20B *	40	49	2	19	50	28	20.25
EC4038-BLA	40	38	2		50		BLANK
EC5045-20B	50	45	2	20	60	23	20.25
EC5048-25B	50	48	2	23	60	23	25.25
EC5070-25B *	50	70	2	25	60	43	25.5
EC5070-25B-SP	50	70	2	25	60	43	25.25
EC5070-30B-SP	50	70	2	25	60	43	30.25
EC5048-BLA	50	48	2		60		BLANK
EC5570-30B-SP	55	70	2	25	65	43	30.25
EC6050-25B	60	50	2	22.5	70	25.5	25.25
EC6052-25B *	60	52	2	25	70	25	25.25
EC6053-30B	60	53	2	25.5	70	25.5	30.25
EC6053-BLA	60	53	2		70		BLANK
EC6350-25B	63	50	2	22.5	73	25.5	25.25
EC6353-30B	63	53	2	25.5	73	25.5	30.25
EC6360-35B	63	60	2	29.5	73	28.5	35.25
EC6364-40B	63	64	2	32	73	30	40.25
EC6364-BLA	63	64	2		73		BLANK
EC7050-25B	70	50	2	22.5	80	25.5	25.25
EC7053-30B	70	53	2	25.5	80	25.5	30.25
EC7062-30B *	70	62	2	25	80	35	30.5
EC7060-35B	70	60	2	29.5	80	28.5	35.25
EC7060-BLA	70	60	2		80		BLANK
EC7550-25B	75	50	2	22.5	90	25.5	25.25
EC7553-30B	75	53	2	25.5	90	25.5	30.25
EC7560-35B	75	60	2	29.5	90	28.5	35.25
EC7560-BLA	75	60	2		90		BLANK
EC8060-30B	80	60	2	25	95	33	30.25
EC8062-30B *	80	62	2	25	95	35	30.5
EC8063-35B	80	63	2	28	95	33	35.25
EC8070-40B	80	70	2	32	95	36	40.25
EC8070-BLA	80	70	2		95		BLANK

* DENOTES MAY BE DRILLED AND TAPPED FOR GREASE NIPPLE

MATERIAL: STEEL S355JR ASTM A105
 SP : DENOTES, MILLED TO 45mm WIDE
 BLA : DENOTES, BLANK NOT DRILLED