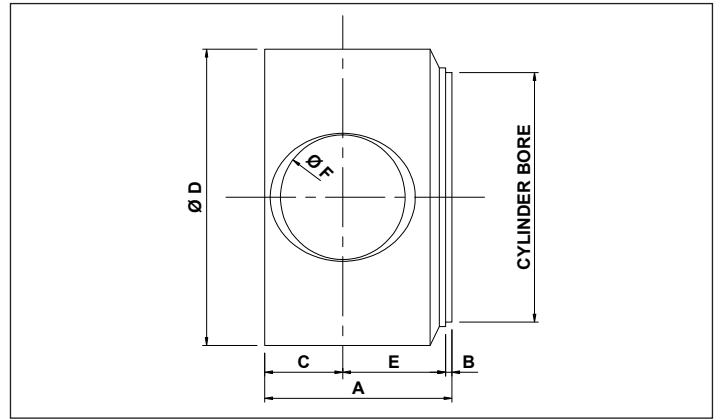


END CAPS BORED



END CAP EC	CYLINDER BORE 90	TOTAL LENGTH A 60	HOLE SIZE 30	BORED B
---------------	---------------------	----------------------	-----------------	------------

PART NUMBER	CYLINDER BORE	A	B	C	Ø D	E	Ø F
EC9060-30B *	90	60	2	25	105	33	30.25
EC9063-35B	90	63	2	28	105	33	35.25
EC9070-40B	90	70	2	32	105	36	40.25
EC9070-BLA	90	70	2		105		BLANK
EC10070-30B *	100	70	2	34	115	34	30.5
EC10070-35B	100	70	2	30	115	38	35.25
EC10073-40B	100	73	2	33	115	38	40.25
EC10088-50B	100	88	2	40	115	46	50.25
EC10088-BLA	100	88	2		115		BLANK
EC12590-40B	125	90	2	38	145	50	40.25
EC12597-50B	125	97	2	45	145	50	50.25
EC12597-BLA	125	97	2		145		BLANK

* DENOTES MAY BE DRILLED AND TAPPED FOR GREASE NIPPLE

MATERIAL: STEEL S355JR ASTM A105
 BLA : DENOTES, BLANK NOT DRILLED